



Universitas  
Negeri Yogyakarta



# STUDENT HANDBOOK

Department of Geography Education  
Faculty of Social Sciences

2019

Information  
Contact:

+6274-586168 psw 386  
geografi@uny.ac.id

Colombo 1, Yogyakarta 55281

## Welcoming Remarks

Welcome to the Faculty of Social Sciences, Yogyakarta State University (YSU)

Studying at university is one of the most interesting, challenging and rewarding activity you will ever do. We are proud that you choose the Faculty of Social Sciences YSU as part of this experience.

Geography Education is one of the departments in the Faculty of Social Sciences. In this department you will learn about geography and its teaching. Graduate profile from this department are as geography teacher, geography education researcher, and manager of the geography laboratory at school

We realize that in designing and performing educational activities, many problems may appear, especially dealing with recognizing and carrying out administrative activities. This handbook will provide an overview of the lecturing at FIS UNY and provide a quick guide to services, how to access them and what you need to do when facing problems.

This handbook also describes the courses that the students will take and outlines the learning process that the students will go through. Some information that is not covered in this handbook is presented it in our website. Accessing a website is the best way to keep up with news and updates of the Department of Geography Education.

Studying at the Faculty of Social Sciences YSU is part of your opportunity to challenge and develop yourself, meet and discuss with people from different backgrounds, regions and cultures to build the foundation for your future success.

Hopefully we can be a part of your success.

Prof. Dr. Ajat Sudrajat, M.Ag  
Dean



# **Department of Geography Education**

## **FACULTY OF SOCIAL SCIENCES**

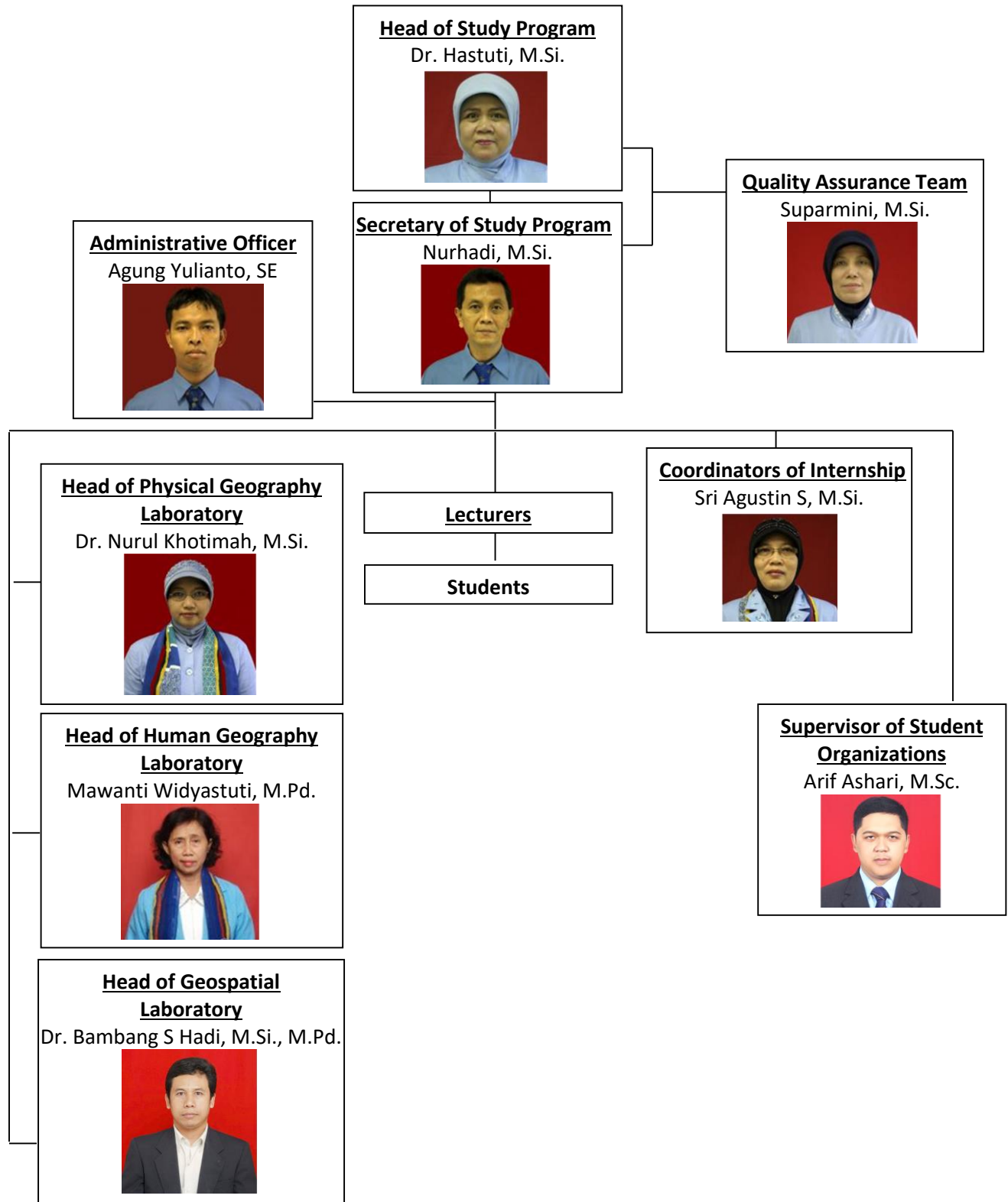
### **Getting Closer to the Department of Geography Education, Faculty of Social Sciences**

The Department of Geography Education is one of the eight departments at Faculty of Social Sciences Universitas Negeri Yogyakarta (UNY). This department is one of the oldest department in the faculty of social sciences, founded on September 14, 1965. The Department of Geography Education was originally a major in earth science, at the Faculty of Social Sciences Teacher Training (FKIS), part of Teaching and Education Institute of Yogyakarta (IKIP Yogyakarta). In subsequent developments, this department has become Geography Education at the Faculty of Social Sciences Education (FKIPS) in 1978. Since 1999 this department become Geography Education at the Faculty of Social Sciences (FIS), part of UNY, then Geography Education at the Faculty of Social Sciences and Economics in 2006, and returned to Geography Education at the Faculty of Social Sciences in 2010.

The Faculty of Social Sciences itself, is well known as the faculty of movement which offers alternatives to Indonesian-based social thinking. The establishment of this Faculty cannot be separated from the history of the establishment of Yogyakarta State University (formerly Institute of Teacher Training and Education) as one of the teacher's college (LPTK). The Faculty of Social Sciences YSU formerly was the Faculty of Social Knowledge Teacher Training (FKPS) which later changed its name to the Faculty of Social Sciences Teacher Training (FKIS), then it changed to the Faculty of Social Sciences Education (FKIPS), it changed again to the Faculty of Social Sciences (FIS), it developed into the Faculty of Social and Sciences and Economics (FISE) and now it is known as the Faculty of Social Sciences (FIS).

The Faculty of Social Sciences has set the goal to produce educators, researchers, and laboratory manager in school. The vision of the Department of Geography Education is By 2025 becomes a top Geography Education study program in ASEAN that is founded on piety, independence, and intelligence. The missions are: (1) Conduct academic and profession education in the field of geography education in order to produce high quality graduates that prioritize piety, independence, and intelligence, (2) Conduct research activities in the field of geography education in order to discover, develop, and disseminate science and technology, for the benefits of both individuals and communities, supporting regional and national development, as well as contributing to solving global problems, (3) Conduct community service and community empowerment activities in the field of geography education, for supporting the potentials development of humans, communities, and nature in order to actualize the community welfare, (4) Conduct the governance in the geography education study program that is good, clean, and accountable in the implementation of higher education institution.

Diagram of Staffing Structure of the Department of Geography



## Dosen Jurusan Pendidikan Geografi



Prof. Dr. Mukminan  
mukminan@uny.ac.id  
Geography & IT Learning Media



Dr. Hastuti, M.Si.  
hastuti@uny.ac.id  
Social Geography



Dr. Muhsinatun Siasah Masruri, M.Pd.  
muhsinatun\_siasah@uny.ac.id  
Geology



Dr. Suhadi Purwantara, M.Si.  
suhadi\_p@uny.ac.id  
Hydrology



Suparmini, M.Si.  
suparmini@uny.ac.id  
Rural Geography



Dr. Bambang Syaeful Hadi, M.Si., M.Pd.  
bambang\_saefulhadi@uny.ac.id  
Remote Sensing



Nurhadi, M.Si.  
nurhadi\_fise@uny.ac.id  
Development Geography



Dr. Muhammad Nursa'ban, M.Pd.  
m\_nursa'ban@uny.ac.id  
Geography Learning Evaluation



Dr. Dyah Respati SS, M.Si.  
dyah\_respati@uny.ac.id  
Geographic Information System



Sri Agustin Sutrisnowati, M.Si.  
Population Geography



Dr. Nurul Khotimah, M.Si.  
nurulkhotimah@uny.ac.id  
Environment Geography



Arif Ashari, M.Sc.  
arif\_ashari@uny.ac.id  
Geomorphology



Kimpul Endro Sariyono, M.Pd.  
kimpul\_endro@uny.ac.id  
Cartography



Sutanto Trijuni Putro, M.Sc.  
sutanto.tp@uny.ac.id  
Karst Hydrology



Dr. Nursida Arif, M.Sc.  
nursida.arif@uny.ac.id  
Remote Sensing



Mawanti Widyastuti, M.Pd.  
mawanti\_w@uny.ac.id  
Demography

# CURRICULUM

## 1. VISION AND MISSION OF STUDY PROGRAM

### a. Vision

Becoming an excellent study program in 2025 in producing educational scholars in the field of Geography that are able to compete at the ASEAN level.

### b. Missions

- 1) Organizing academic education and educational profession in the field of geography to produce superior professionals who prioritize devotion, independence, and intellectual.
- 2) Carrying out research activities to discover, develop, apply and disseminate knowledge, which promote individual and society welfare, support regional and national development, and contribute to problem solving.
- 3) Performing community services and empowerment activities that encourage the development of human, community and natural potential to realize community welfare.
- 4) Organizing good, clean and accountable governance of study program to realize higher education autonomy.

## 2. GRADUATE PROFILE

The graduate profile of the Geography Education Study Program is having primary expertise as educators in the field of geography, having additional expertise as managers of geography laboratories at schools and researchers in the field of geography education.

## 3. LEARNING OUTCOMES

The learning outcomes of geography education study programs consist of attitudes, knowledge, special skills, and general skills, as follows:

### Knowledge

- a. Master the concepts, theories, and research methodologies in the field of geography and geography education in accordance with current issues, in order to develop logical, critical, systematic, and creative thinking in the field of geography education
- b. Able to study various concepts, theories, and methods of learning in the field of geography and geography education more effectively through interdisciplinary and multidisciplinary approaches
- c. Compile scientific concepts and theories in the field of geography and geography education based on the rules, procedures, and scientific ethics in the form of thesis.

### Special Skills

- a. Able to apply concepts, theories, and methodologies in the field of geography and geography education in accordance with current issues, in order to develop



logical, critical, systematic, and creative thinking in the field of geography education

- b. Able to study various concepts, theories, and methods of learning in the field of geography and geography education more effectively through interdisciplinary and multidisciplinary approaches
- c. Able to compile scientific concepts and theories in the field of geography and geography education based on the rules, procedures, and scientific ethics in the form of a thesis
- d. Able to manage a geography laboratory at schools

#### 4. Curriculum Structure

No	Codes	Courses	Credits	Semester
	PGO6201	Teacher's Character and Personality	2	1
	MKU6217	Logic	2	1
	SIF6209	Basics of Geography	2	1
	PGO6202	Basics of Geology	2	1
	PGO6203	Basics of Geomorphology	2	1
	PGO6104	Practicum of Basic Geomorphology	1	1
	PGO6205	Meteorology and Climatology	2	1
	PGO6106	Practicum of Meteorology and Climatology	1	1
	MKU6208	Pancasila Education	2	1
	SIF6201	Basics of Social Sciences	2	1
	MDK6204	Educational Anthropology Sociology	2	1
	MKU6210	English	2	1
	SIF 6205	Basics of History Science*	2	1
	SIF 6206	Basics of Sociology*	2	1
	MKU6301	Islamic Religious Education	3	2
	MKU6302	Catholic Religious Education	3	2
	MKU6303	Christian Religious Education	3	2
	MKU6304	Hindu Religious Education	3	2
	MKU6305	Buddhist Religious Education	3	2
	MKU6306	Confucian Religious Education	3	2
	MKU6209	Indonesian Language	2	2
	MDK6202	Education Psychology	2	2
	SIF6202	Philosophy of Social Sciences	2	2
	MKU6207	Civic Education	2	2
	PGO6207	Hydrology	2	2
	PGO6108	Practicum of Hydrology	1	2
	PGO6309	Geography Curriculum and Learning	3	2
	PGO6210	Soil Geography	2	2
	PGO6111	Field Work Lecture I	1	2
	PGO6112	Entrepreneurship	1	2
	MKU6211	Indonesian Geomorphology	2	2

	PGO6213	Education Psychology	2	3
	PGO6214	Basic and Applied Statistics	2	3
	PGO6115	Basic and Applied Statistics Practicum	1	3
	PGO6216	Cartography	2	3
	PGO6117	Cartography Practicum	1	3
	PGO6218	Indonesian Geology	2	3
	PGO6319	General Demographics and Techniques	3	3
	PGO6220	Social Geography	2	3
	PGO6238	Cosmography	2	3
	PGO6222	Economic and Resource Geography	2	3
	MDK6203	Education Management	2	3
	SIF6203	Indonesian Social Theory	2	3
	PGO6223	Mineralogy and Petrology	2	4
	MDK6201	Education Science	2	4
	PGO6325	Geography Learning Strategies (Internship 1)	3	4
	PGO6226	Cultural Geography	2	4
	PGO6227	Remote Sensing	2	4
	PGO6128	Remote sensing practicum	1	4
	PGO6229	Rural Geography	2	4
	PGO6230	Regional Geography of Indonesia	2	4
	PGO6231	Tourism Geography	2	4
	PGO6132	Field Work Lecture of Geography II	1	4
	PGO6233	Geography and IT Learning Media	2	4
	PGO6234	Urban Geography	2	4
	PGO6224	Photogrammetry *	2	4
	PGO6235	Basic Geographic Information System	2	5
	PGO6236	Assessment of Geography Learning	2	5
	PGO6237	Disaster Study	2	5
	PGO6321	Research Methods of Education and Geography	3	5
	PGO6239	Evaluation of Land Resources Capability	2	5
	PGO6240	Regional Geography of Developing Countries	2	5
	SIF6304	Social Research Methodology	3	5
	PGO6241	Biogeography	2	5
	PGO6243	Oceanographic	2	5
	PGO6244	Applied Remote Sensing	2	5
	PGO6245	Environmental studies	2	5
	PGO6242	Political Geography *	2	5
	PGO6246	Regional Geography of Developed Countries	2	6
	PGO6247	Population Geography	2	6
	PGO6248	Applied Geography Information System	2	6
	PGO6149	Applied Geographical Information Systems Practicum	1	6
	PGO6250	Agricultural Geography	2	6
	PGO6251	Transportation and Communication Geography	2	6



	PG06252	Geography of Development and Regional Planning	2	<b>6</b>
	PG06254	Industrial Geography	2	<b>6</b>
	PG06155	Field Work Lecture of Geography III	1	<b>6</b>
	PG06256	Management of Geography Laboratory	2	<b>6</b>
	PG06257	Micro Teaching (Internship 2)	2	<b>6</b>
	PG06253	Capita Selecta of Geography*	2	<b>6</b>
	PPL6301	Teaching Practice	3	<b>7</b>
	MKU6312	Field Work	3	<b>7</b>
	PG06658	Thesis	6	<b>8</b>

# FACILITIES

The Faculty of Social Sciences provides facilities that support the development of academic and non-academic fields for the entire academic community of the Department of Geography Education. The facilities are classified into general and specific categories. General facilities are used as resource sharing with other departments. meanwhile specific facilities are specifically only used to support learning activities in the department of geography education.

The general facilities are:

- Comfortable classrooms

The Faculty of Social Sciences provides classrooms for lecturing activities which are located in the east part of the faculty. Each classroom is 7x10 m and has a capacity of 50 seats. Also, they are equipped with supporting learning facilities such as LCD, Computers, Wifi Networks, Audio Speakers, and AC.



- Seminar rooms

Two types of seminar room are available for lecturers and students namely a large seminar room with a capacity of 200 seats, and a small seminar room with a capacity of 80 seats.



- Thesis defense rooms

There are two thesis defense rooms at the Faculty of Social Sciences which are located in the 2nd floor of the north building

- Prayer Room

The prayer room at the Faculty of Social Sciences is quite large and is equipped with muslim woman's prayer dresses (*mukena*) and sarong, which can be used by students for worship and other religious activities.



- Library

The Library of the Faculty of Social Sciences is located in the Dean Building on the 1st floor. The Library offers a circulation service and houses hundreds of book collections and journals that can be utilized by students as learning resources.



- **Student Centers**

The Faculty of Social Sciences has a student center building that functions as a center for student activities. In the student center building area there is a Geography Education Student Association room which is used for the activity center and socialization among Geography Education Study Program students. In the student center building there is also a music room, seminar room, and digital library which can also be used as a means of social activities among students.

- **Gazebo / co-working space**

Gazebos are built in several corners of the Faculty of Social Sciences which can be used by students to discuss, do assignments, organize activities, and perform other academic activities. Gazebos are equipped with electricity and wifi network for students.

- **Canteen and Cooperatives**

The canteen is located in the Faculty of Social Sciences area, which is on the first floor of the student center building. The canteen is designed like a mini food court offering various types of food which is affordable for students

- **Parking lots**

The Faculty of Social Sciences has three parking areas including east parking lot, west parking area, and the Pancasila park with a capacity of 800 motorcycles and 40 cars.

- **Free Drinking Water Refill**



In order to support the environmentally friendly movement and implement Kemenristekdikti's mandate not to use bottled water, the Faculty of Social Sciences provides a free drinking water refill dispenser in the east building. Students can use it to refill their drinking bottles.

- **E-Library (FISNET)**

E-library at the Faculty of Social Sciences Yogyakarta State University has been operating to serve the needs of lecturers and students to get access to literature sources. PCs are provided to increase the access to the E-library of both faculty and



university. The capacity of international internet connections used at YSU including Fisnet is 1.05 GBps. In addition, LAN access in the campus area via wireless has been available through wifi hotspot in 43 strategic points in which the coverage area reaches 100% of the campus area. Moreover, there are three wifi spots in the Faculty of Social Sciences which cover academic services and lecture buildings.

- Micro Teaching laboratory

The Micro Teaching laboratory is used for teaching practice for students of the Department of Geography Education in semester 6. This laboratory has two studios equipped with teaching equipment. both studio microteaching laboratories each have 15 seats.

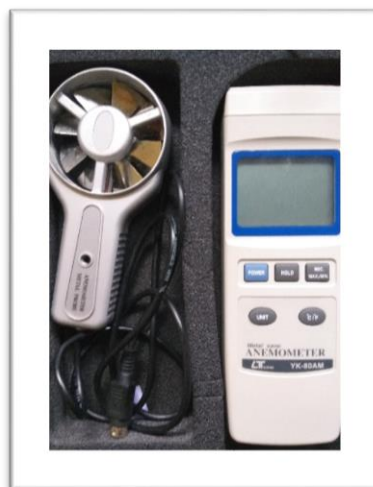
- Internet Networks

All civitas academic at the Faculty of Social Sciences get free internet access that can be reached within the campus complex. They can access the internet by logging in via their respective email accounts on the SSO (Single Sign On) page at <http://sso.uny.ac.id> and Eduroam.

#### Specific Facilities Are:

- Physical Geography Laboratory

The Physical Geography Laboratory can be used for practical learning in the field of physical geography such as geomorphology, hydrology, meteorology-climatology, and soil geography. The types of equipment in the physical geography laboratory include: personal computers, multiparameter meters, geological compass, direction compass, abney level, stopwatch, altimeter, soil pH and moisture meter, geology hammer, thermometer, curvimeter, clinometer, water pass, barometer, automatic anemometer, hand cup anemometer, digital anemometer, loupe, sunshine recorder, automatic rain gauge, manual rain gauge, soil sieve, asmann and slink psychrometer, binocular, electric scales, roll meters, GPS, hygrometer, soil drill, soil test kit, pan evaporimeter, and handy talkie.





- Human Geography Laboratory

The human geography laboratory provides various references. This laboratory has library collections and population data.

- Geospatial Laboratory

The Geospatial Laboratory can be used for practical learning related to mapping and geospatial analysis such as cartography, remote sensing, and geographic information systems. The types of equipment in the geospatial laboratory include: personal computers, stereoscopes, theodolites, planimeters, phantographs, theodolite tripods, scanners, and plotter.



# **STUDY IN DEPARTMENT OF GEOGRAPHY EDUCATION**

## **Planning a study**

New students who have been accepted in Department of Geography Education will be guided by an academic advisor in planning and conducting studies. During the study, the academic advisor will provide assistance and evaluation of the study. Based on the curriculum, students must take a total of 144-150 credit points in order to complete their studies and obtain a bachelor's degree. The credit points can be completed for eight semesters with a maximum time limit of 12 semesters. Planning to take credit points each semester is guided by an academic advisor.

Completing the form of study plan is carried out by students online. However, before filling the forms, students must ask for suggestions and approval from their academic advisors. Academic advisors will give online approval of the credits plan that will be taken by students by considering the GPA of the previous semester. For a new student, academic advisors will give approval to take all courses offered in the first semester. If students want to cancel certain courses that have been taken, they should get approval from the academic advisor no later than the 8th week from the start of lecture activities. Also, students can add one course no later than the 3rd week from the start of the lecture provided that it does not exceed the maximum credits allowed in one semester.

The form of study plan becomes the basis for allowing students to attend the lectures. Students are permitted and deserve to take lectures and examinations if the courses are listed in the form of study plan which exists in the academic information system (<https://siakad2013.uny.ac.id>). The meetings between students and academic advisors to discuss study plans are often referred to as student's consultation activities.

## **Learning Methods**

The lectures are conducted based on a semester credit system. There are three types of semester at Yogyakarta State University, namely odd semester, even semester, and in-between-semester. An odd semester is from September to January of the following year. An even semester is from February to August in the same year. In-between-semester is from July to August in the same year. The lecture activities for one semester consists of 16 meetings, excluding the final semester exams.

Beside face-to-face lectures in the classroom, the Department of Geography Education also organizes blended learning and full e-learning models. Blended learning is performed by combining face-to-face learning with online learning. In a blended learning model, learning is alternately carried out between face-to-face lectures in the classroom and online learning. Meanwhile, the full e-learning is a learning model whose entire learning process is performed online. In this case, online learning activities are carried out through



<http://besmart.uny.ac.id/v2/>, which contains various online courses offered by all study programs at the faculty of social sciences. several courses that have been held with a blended learning system in 2019 include: soil geography, regional geography of Indonesia, and philosophy of social science

In the teaching and learning process, the lecturers will fill in online lecture attendance records for 16 meetings. Students must attend lectures at least 75% in one semester. Students who are absent during the lectures due to sick or other logical reasons are recorded as present. If the students do not meet 75% attendance, they do not deserve to take the final exam and get E. Moreover, the students are required to fill out an evaluation sheet of the lectures.

The lectures carried out at the Department of Geography Education cover theory, field practice, and practicum. The time allocation for each lecture on theory, field practice, and practicum varies referring to the academic regulations at Yogyakarta State University. Lectures are conducted by employing a variety of methods that encourage students to actively involve in the learning activities. Practicum activities are conducted in Physical Geography and Geospatial Laboratory, Microteaching Laboratory. The activities include: Geographic Information System analysis, Remote Sensing, Mapping, Statistics, Geomorphological analysis, Soil Analysis, Meteorology and Climatology analysis, and Hydrology analysis. Practical activities are also supported by outdoor activities such as in the measurement of Meteorology-Climatology, Geology, Geomorphology, Soil, and Hydrology.



As the educational study program, there is teaching practices in this department, conducted in the microteaching laboratory. This teaching practice is carried out before the students conduct the field teaching practice at school. In addition, learning innovations continue to be carried out in the faculty of social sciences, such as developing game-based learning and learning media that encourage student activities.



### Assessment and Evaluation Criteria

The evaluation of the study is carried out by taking into account various aspects including knowledge, skills, and attitudes / characters that reflect student competencies. In evaluating, various approaches are used based on the competencies required by students. Final scores obtained by students reflect their competencies in all aspects namely a participation in lectures, an assignment / report completion, and a test score.

Basically, the assessment method is adjusted to the desired learning outcome of each subject. In some study programs, some courses enhance attitudes, knowledge, general skills, and special skills. Each course has a different assessment method. To conduct an attitude assessment, the lecturers observe student's activities in the classroom using the grading rubric. Meanwhile, to assess the mastery of knowledge and skills in each subject, a variety of methods are used including oral tests, performance, assignments, portfolios, and written tests with established assessment standards. The final score obtained is in numbers ranging from zero to 100. Then, the scores are converted into letters between A to E in accordance with rules stipulated in academic regulations at YSU. The score of each course is then used to calculate the GPA which becomes one of the graduation criteria. The assessment standards are presented in the following table.

Final Score	Conversion	
	Letter	Weight
Scale of 100		
86-100	A	4,00
81-85	A-	3,67
76-80	B+	3,33
71-75	B	3,00
66-70	B-	2,67
61-65	C+	2,33
56-60	C	2,00
41-55	D	1,00
0-40	E	0,00

There are several aspects which are required for graduation, including the number of credits taken, minimum of GPA, and ProTEFL scores. For undergraduate programs, in order to meet the graduation requirements, students must take 144 credits with a minimum GPA of 2.50 and a ProTEFL score of 425. In addition, there are additional requirements namely the students may get a maximum of 10% for D score and do not get E score. The ProTEFL test in question is a test of English proficiency that is organized by the YSU language training center and has a score equivalent to other tests. Students who have met the graduation requirements can graduate with different predicate such as summa cumlaude, cumlaude, very satisfactory, or satisfactory.

### **Study Evaluation**

There are two stages of study evaluation which are conducted to determine student learning outcomes. The first stage of evaluation is carried out to identify various obstacles in the learning process. This stage is intended to design a more planned, structured, and systemic learning process. The evaluation results are given to students, academic advisors, and students' parents. The second stage of evaluation is conducted to determine whether students can continue their studies or not. If a student is unable to complete his study, he is declared resigned and is given a letter stating that they have once taken a study.

The first stage of evaluation for the bachelor program is carried out in the first three semesters, and the second stage is conducted in the next three semesters. The study progress in the third semester is that the students have taken at least 30 credits of courses without D and E grades and a GPA of 2.50. Meanwhile, the study progress in the sixth semester is that the students have taken a minimum of 60 credits of courses without grades D and E with a minimum GPA of 2.50.

### **Graduation**

Students who have completed the courses and met the graduation requirements are declared to have graduated from the faculty of social sciences and deserved a bachelor's degree in accordance with their field of study. Graduation requirements set by YSU for undergraduate programs are completing 144 credit credits, getting a minimum GPA of 2.50, obtaining a ProTEFL score of 425, getting a maximum D value of 10%, and having no E mark. Students who have attended the lectures and met the graduation requirements may take part in the Judicium as a form of graduation ceremony. In this stage, students must follow the entire process. Judicium is held every month in which time is set by the Faculty of Social Sciences. Students who cannot take part in the Judicium in the given month may participate in the following month. Judicium as a form of student graduation is stated in a Decree of the Dean of the Faculty of Social Sciences. The graduation date is set as the date of Judicium. The last stage in the graduation process is a graduation ceremony. Graduation ceremonies are held based on the academic calendar. In the graduation ceremony, each graduate receives an original diploma and a diploma supplement.

## STAFFS AND STUDENT ACHIEVEMENT

Lecturers of Geography Education study programs have achievements in various fields including as BAN-PT Assessor; Chairperson and members of the Ad-hoc Team Content Standards for Primary and Secondary Education, BSNP, Ministry of Education and Culture; National Curriculum Implementation Instructor 2013; National Science Olympic Jury; Editors and reviewers of various scientific journals; national research grant recipients; and became a member of a professional organization, especially the Indonesian Geographic Association (IGI). In addition, Geography Education study program lecturers are also believed to be guest lecturers at universities abroad.

Students of the department of geography education have international and national level achievements. International level achievements included gold medals at the World Innovation and Invention Forum in China in 2017, silver medals and bronze medals at the International Invention and Innovative competition in Malaysia in 2017 and 2018, as well as the best oral presentation in the Climate Smart and Disaster Resilient ASEAN International Conference in the Philippines in 2019.

At the national level, the achievements included as finalists of the National Student Scientific Week (PIMNAS) in 2018 and 2019, champions of scientific writing competitions, champions of debate competitions, and champions of national essay writing competitions. At the PIMNAS 2019, students from the department of geography education succeeded in winning the gold medal in the category: student creativity program - social humanities research (PKM-PSH). Geography Education students also have achievements in non-academic fields, especially sports and cultural arts. The following are some of the achievements obtained by students from the Department of Geography Education in the last three years.

No	Year	Achievement	Student(s) name
1	2019	Gold Medal, National Student Scientific Week (PIMNAS) in Udayana University Denpasar. Title: SMATA Jogja (Smart Thematic Map Jogjakarta): Media Pembelajaran Literasi Spasial Penyandang Tunanetra	Roni Wijayanto
2	2019	Bronze Medal, International EUREKA Innovation Exhibition in University Kuala Lumpur Malaysian Spanish Institute (UniKL MSI). Title: Snakes and Ladder Game with The Exploration of Holland Career Theory.	Siti Umaroh
3	2019	Best Oral Presentation at Climate Smart and Disaster Resilient ASEAN International Conference, Harvard Kennedy School Alumni	Maya Eka Septiana Muhammad Alvin Anafi

		Association of the Philippines (HKSAAP) and Environmental Climate Change Research Institute (ECCRI)	
	2019	1 <sup>st</sup> winner Debate Competition at FISIP Intellectual Competition, Faculty of Social and Political Sciences Universitas Riau	Maya Eka Septiana
	2018	Silver Medal in International Invention and Innovative Competition, MNNF Network, Malaysia	Roni Marudut Situmorang
	2018	Bronze Medal in International Invention and Innovative Competition, MNNF Network, Malaysia	Siti Umaroh
	2018	Bronze Medal on Invention, Innovation and Design, The 2 <sup>nd</sup> Asia International Conference of Art and Design, Langkawi Malaysia	Maya Eka Septiana
	2018	1 <sup>st</sup> winner of scientific writing competition at The 2 <sup>nd</sup> Indonesian Geography Student Summit, Universitas Negeri Makassar	Nurma Yuni Prapriwi Muh Hafizh Imaduddin Maya Eka Septiana
	2017	Gold Medal at The 2 <sup>nd</sup> World Invention and Innovation Forum, China Association of Invention	Roni Marudut Situmorang
	2017	Silver Medal in International Invention and Innovative Competition, MNNF Network, Malaysia	Roni Marudut Situmorang
	2017	Bronze Medal in International Invention and Innovative Competition, MNNF Network, Malaysia	Yonatan Yoliuss Anggara Roni Marudut Situmorang Endar Tri Pambudi
	2017	3 <sup>rd</sup> winner of scientific writing competition at Soil Festival Institut Pertanian Bogor	Yonatan Yoliuss Anggara Roni Marudut Situmorang
	2017	3 <sup>rd</sup> winner of scientific writing competition at Online FIP FAIR, Faculty of Education Science Universitas Negeri Padang	Erry Ersani